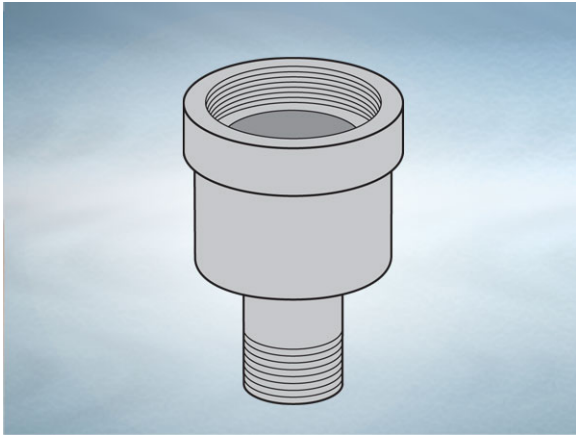


Product Details

T742 Grating / Cover to Pipework Adaptor

Technical Data



Dimensions:

130 dia. overall size

220 - Length

Connection - male 2" BSP threaded connection (50mm)

Materials - Cast iron, lacquered

Weight - 3.5 kg

General Description:

Cast Iron T series Vari-Level Grating / Cover to Pipework Adaptor (Enables Wade Vari-level gratings and covers with a 4" throat to be connected to pipework wherever a 2" BSP male thread is required.). Vari-Level gratings and covers, when used without a body, may be connected to pipework by means of a cast iron adaptor.

Materials:

Cast Iron - BS EN 1561: Used for bodies, membrane clamping collars, spigot adaptors and accessories such as extensions. A widely used metal in the drainage industry, its resistance to corrosion permits extended use under extreme conditions. Castings are coated with a high grade lacquer paint to provide internal and external surface coverage. Paint will gradually wear off and is replaceable; oxidation (surface rusting) is a natural process which does not weaken the material. A zinc anti-corrosion coating is applied to certain castings by sherardizing.

All dimensions are in millimetres unless stated. In line with general practice all dimensions shown are nominal.

Wade International

Third Avenue, Halstead, Essex, CO9 2SX.

Telephone: +44 (0)1787 475151

Fax: +44 (0)1787 475579

e-mail: wadetech@alumascwms.co.uk

website: <https://www.alumascwms.co.uk/brands/wade/>

Typical Installation for T742:

Note: This illustration may show a similar Wade Product - it is intended to show the general installation type only.

